

ITEM		UNIT	VD7550	VD10060
Travel	X-axis Travel	mm	750	1000
	Y-axis Travel	mm	500	600
	Z-axis Travel	mm	500	600
	Distance from Spindle nose to table	mm	100-600	120-720
Table	Table Size[L*W]	mm	850*500	1100*600
	T-slot QTY*W*D]	mm	5*14*100	5*18*100
	Max. Loading Capacity	kg	500	700
Controller	Controller	-	Mitsubishi M80	Mitsubishi M80
Spindle	Spindle Drive Motor (continuous/30 min.)	kw	5.5/7.5	7.5/11
	Spindle Drive Type	type	DIRECT	DIRECT
	Max. Spindle Speed	rpm	10000	10000
	Spindle Taper	type	BT-40	BT-40
Feed	Axis Rapid Traverse Rate	m/min	36/40	24/36
	Cutting Feedrate	m/min	10	10
	3-Axis Guide Width[X/Y/Z]	mm	30/30/35	35/45/45
Tool Magazine	Tool Change Mechanism	type	ARM	ARM
	Tool Shank	type	MAS BT-40	MAS BT-40
	Tool Capacity	pcs	24	24
	Tool Selection	-	Random	Random
	Max. Tool Length	mm	300	300
	Max. Tool diameter	mm	φ80[φ150 HEAVY TOOL]	φ80[φ150 HEAVY TOOL]
	Max. Tool Loading	kg	8	8
Others	Type of Chip Removal	-	DUAL SCREW	Build-in Crumbs
	Electricity Power	voltage	220V	220V
	Net Weight	kg	4000	6800
	Floor space [L*W*H]	mm	2350*2450*2530	2600*2450*3120

PRODUCT PROFILE

VD SERIES
ONE SHINE TECHNOLOGY.Co.,LTD.



• Design and specification are subject to change without notice.

VD Series

ONE SHINE TECHNOLOGY.Co.,LTD.

ONE SHINE manufacturing design is to emphasize the high rigidity of the whole machine. VD series was designed for the high efficiency processing demand industrial of model from ONE SHINE TECHNOLOGY, most suitable for mass components production of Vehicle parts,3C and IT industry processing.

VD-7550 / 10060

BT40,10000rpmDirect spindle 3 axes linear ways



VD FEATURES

The structural parts of the machine are the manufactured from high quality Meehanite cast iron, rib reinforced and stress released to assure it remains deformation-free year after year.

3 axes slideways are mounted with precision linear ways. Extra large span between ways. High feed rate and superior stability. Servo motor directly drives ballscrew, featuring high positioning accuracy without backlash problem.

The direct driving spindle 12000rpm is available for meeting customer's needs. This are low noise, less backlash, and little vibration.



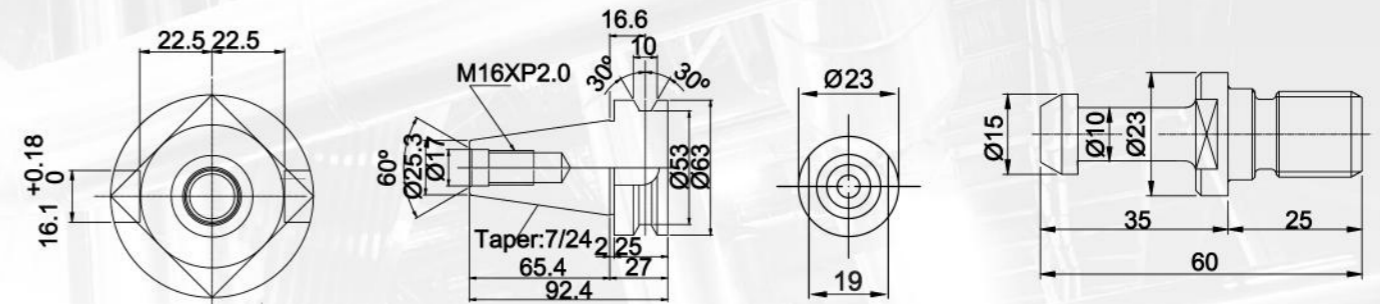
Optimal Structure Design! / Maximum Stability! / Maximum Rigidity!



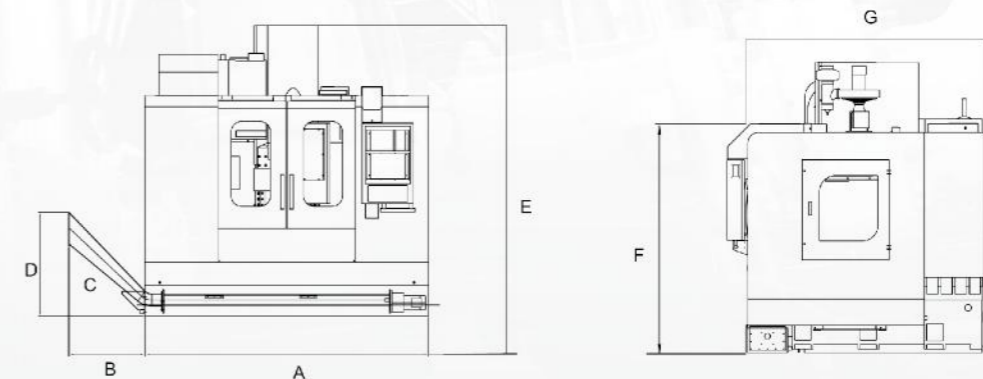
Arm Type Magazine

- Comprehensive quality assurance system.
- Inspection on the assurance system with dependable the requirement of high quality.
- Highest speed and light weight of magazines is to achieve the highest efficiency.
- Fast tool change and high positioning accuracy.

Tool shank BT-40



Machine dimension



	A	B	C	D	E	F	G
VD7550	2350	700	650	961	2530	1920	2450
VD10060	2600	700	650	961	3120	2130	2450

Spindle motor torque drawing

